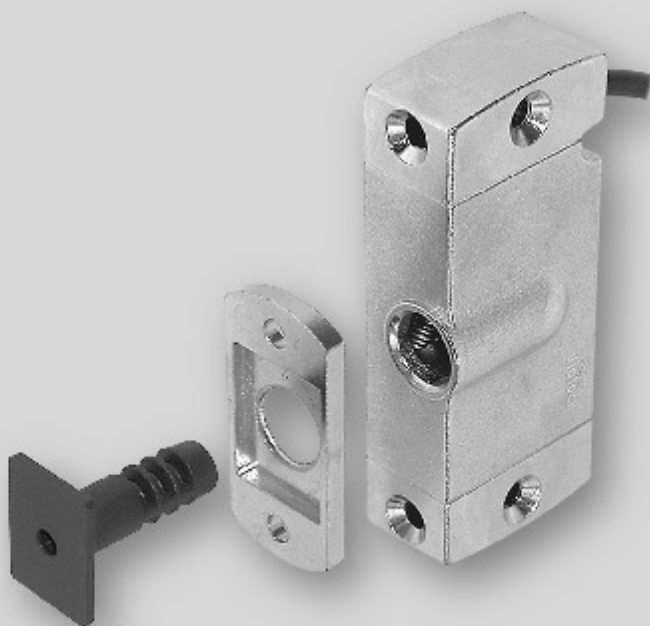


Montageanleitung
Mounting instructions
Instructions de montage
Istruzioni di montaggio
Instrucciones de instalación


HÄFELE



ZV-Schließgehäuse

CL lock case

Boîtier de fermeture VC

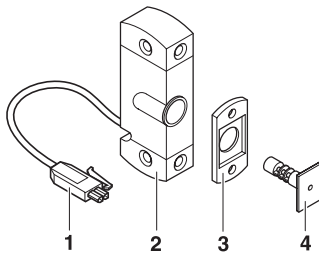
Scatola di chiusura ZV

Caja de cierre CC

Areas of application

The Dialock central locking (CL) lock cases are used for the electromechanical locking of cupboards, drawers, shelves etc.

Supplied with



- 1 AMP connector (supplied loose together with CL lock case)
- 2 CL lock case with connecting cable
- 3 Fixing plate
- 4 Locking bolt

Note

Assembly jig (drilling jig) must be ordered separately.

Technical Information

The CL lock case is controlled via CL terminal with output extender. Up to 128 CL lock cases can be controlled by means of one single CL terminal.

Simple applications can also be realized via wall terminal control.

Technical Data

Power supply	12 VDC
Continuous current consumption	50 mA
Tensile load	> 200 N, acc. to DIN 68 852

Installation

Tools needed:

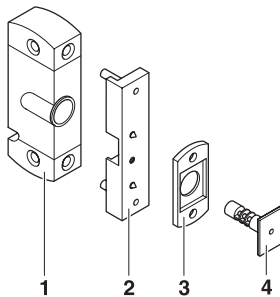
- Crosstip screwdriver Size 2
- Marking stick
- Screws:
 - Wooden carcass and door: 4 Hospa screws (ø 3.5 mm x X mm, depending on the thickness of the carcass)
 - If otherwise: corresponding screws, e.g. self-tapping screws with metal cupboards
- Drilling jig
- Mains power supply tester

Pre-conditions:

- Door thickness with inset doors: minimum 240 mm
- Door thickness with overlay doors: minimum 240 mm

Recommendation:

- With cupboard doors: use hinges with locking automatics
- With drawers: use self-closing drawer guides



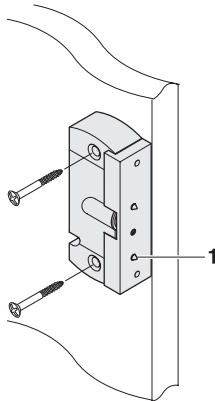
- 1 *CL lock case*
- 2 *Drilling jig*
- 3 *Fixing plate*
- 4 *Locking bolt*

1. Preposition drilling jig and CL lock case.

If the locking bolt is inserted in the CL lock case:

⇒ Connect the mains power supply tester and remove the locking bolt from the CL lock case by pulling it out.

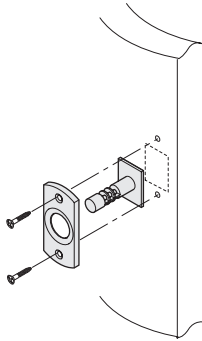
2. Put the drilling jig on the CV lock case.



1 Pins of the drilling jig

3. Place the CL lock case at the carcass inside of the corresponding piece of furniture using the drilling jig.
 - ⇒ With overlay doors: adjust the drilling jig so that it is flush with and parallel to the front edge of the carcass.
 - ⇒ With inset doors: dislocate the CL lock case to the inside by the dimension of the door thickness. Put the drilling jig in such a manner that it is positioned parallel to the carcass edge.
 - ⇒ Doors with stoppers: in addition dislocate the CL lock case to the outside by the thickness dimension of the stoppers.
4. Use the marking stick to mark the screw holes.
5. Use 2 Hopsa screws (\varnothing 3,5 mm) to screw the CL lock case down to the furniture carcass. As for adjustment, leave the drilling jig in position on the case.
6. Push the door against the placed drilling jig.

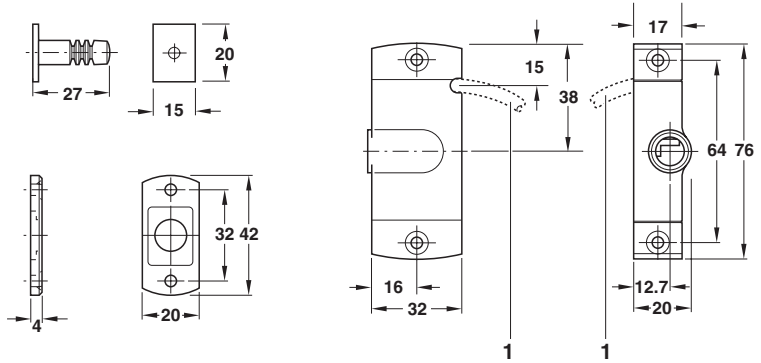
The screw holes for the installation of the fixing plate of the locking bolt are marked by the drilling jig.



7. Put the locking bolt through the fixing plate and screw it down to the door by means of 2 Hospa screws.
8. Lay the connecting cable inside of the furniture.
9. Plug the 2 cable pins into the AMP connector housing until the pins engage. Now press the 2 lugs of the AMP connector together.
10. Connect the AMP connector of the CL lock case to the mains power supply tester and check for functioning. Door must open and close without any problems.
11. Plug the AMP connector into the output extender or into the distributor.

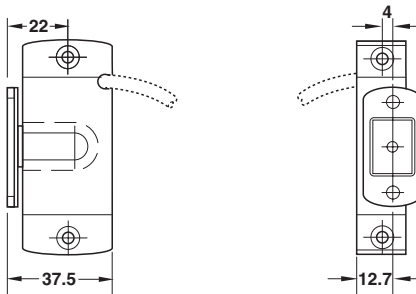
CNC dimensions

If the CL lock case is pilot-drilled by means of a CNC-machine, observe the following dimensions:

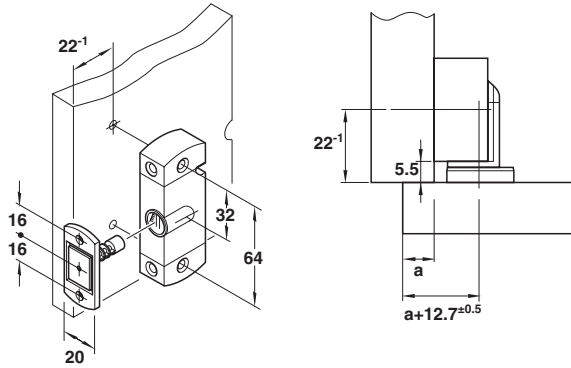


Dimensions of the CL lock case (individual components)

1 Cable outlet

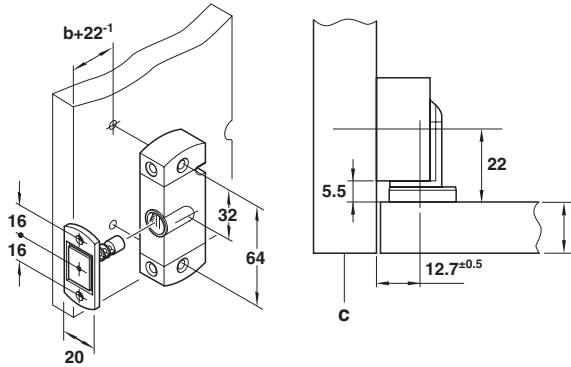


Dimensions of the CL lock case (closed condition)



Drilling dimensions for installation on overlay door

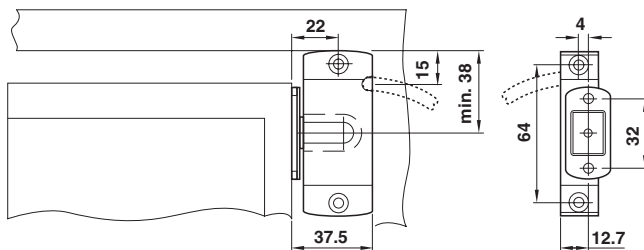
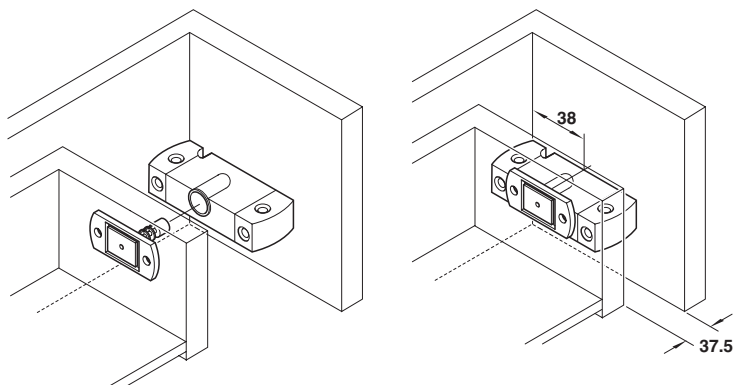
a Overlay of door



Drilling dimensions for installation on inset door

b Thickness of door (if door is flush with carcass front edge)

c Carcass front edge



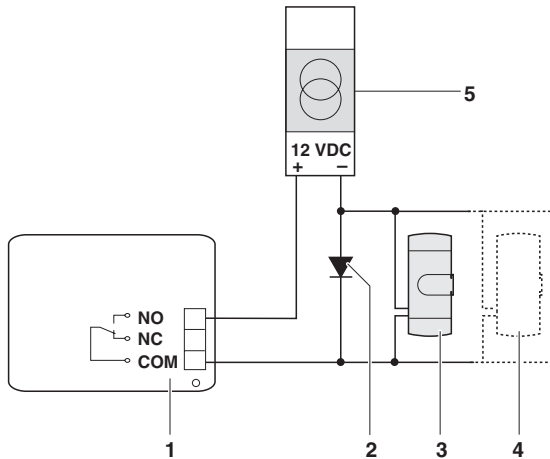
Drilling dimensions for installation on drawers

Connection of up to 15 CL lock cases to the wall terminal



Damage to the wall terminal relay contacts

⇒ Always use a recovery diode if the CL lock case is addressed via wall terminal.



- 1 Control electronics module of the wall terminal
- 2 Recovery diode
- 3 CL lock case
- 4 Additional CL lock cases
- 5 Power supply for CL lock casings

⇒ Insert the recovery diode into the circuit parallel to the CL lock cases (as shown). Make sure the wiring is performed by an electrotechnical expert. The casing of the control electronics module is equipped with terminals for connection of the recovery diode.

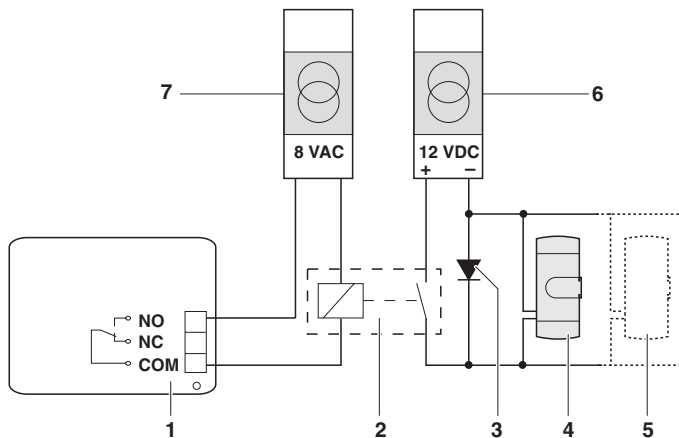
Connection of more than 15 CL lock cases to the wall terminal

A separate power supply for both wall terminal and lock cases is needed when connecting more than 15 CL lock cases to the wall terminal. If this is the case, a switching relay must be connected in series, therefore.



Damage to the switching relay contacts

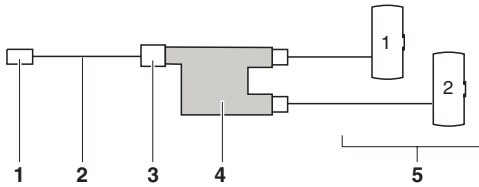
⇒ Always use a recovery diode if the CL lock cases are controlled via wall terminal.



- 1 Control electronics module of the wall terminal
- 2 Switching relay
- 3 Recovery diode
- 4 CL lock cases
- 5 Additional CL lock cases
- 6 Power supply for CL lock cases
- 7 Power supply for the switching relay

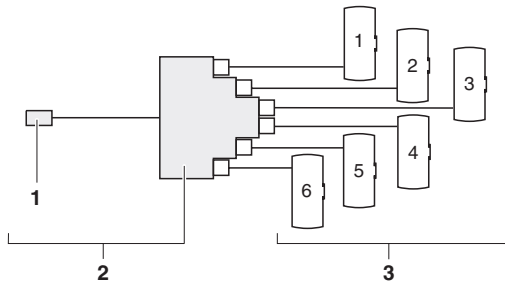
⇒ Insert switching relay and recovery diode in the circuit (as shown).
Make sure the wiring is performed by an electrotechnical expert.

Wiring examples



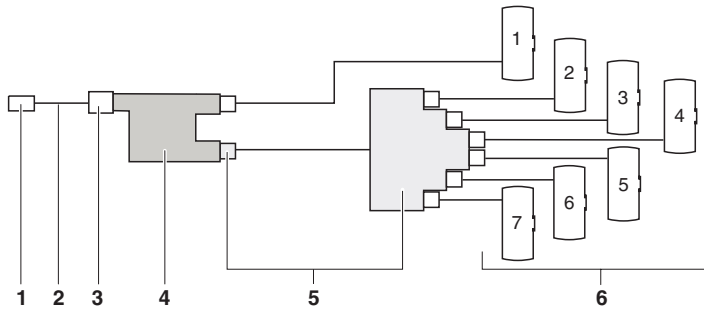
Connection with 2-way distributor

- 1 AMP connector
- 2 AMP extension cable
- 3 AMP female plug
- 4 2 way-distributor
- 5 CL lock cases



Connection with 6-way distributor

- 1 AMP connector of the 6-way distributor
- 2 6-way distributor
- 3 CL lock cases



Connection with combined 2-way and 6-way distributors

- 1 AMP connector
- 2 AMP extension cable
- 3 Female AMP plug
- 4 2-way distributor
- 5 6-way distributor
- 6 CL lock cases

1. When applying a CL terminal: connect the AMP-connector (1) to the output of the output extender.
2. When applying a wall terminal: cut the AMP connector (1) off and perform the wiring in the casing of the control electronics module. Make sure the wiring is performed by an electrotechnical expert.

Montageanleitung 732.29.111

Der Nachdruck der Montageanleitung, auch auszugsweise, oder die Nachahmung der Abbildungen und Zeichnungen sowie die Nachahmung der Gestaltung sind verboten. Für Druckfehler und Irrtümer, die bei der Erstellung der Montageanleitung unterlaufen sind, ist jede Haftung ausgeschlossen.

Liefermöglichkeiten und technische Änderungen vorbehalten.

Stand 02.01

Mounting instructions 732.29.111

The reprint of the mounting instructions, even extracts, or copying of the illustrations and drawings as well as copying of the layout are prohibited.

No liability is accepted for printing errors or errors occurred during the creation of the mounting instructions.

We reserve the right for technical changes and changes of availability.

Status 02.01

Instructions de montage 732.29.111

Il est interdit de reproduire les instructions de montage ou d'en imprimer des extraits, d'en copier des illustrations et des dessins ou d'en imiter la présentation.

Il ne sera assumé aucune responsabilité quant aux erreurs et fautes pouvant résulter de l'impression de ces instructions de montage.

Tous les droits de possibilités de livraison et de modifications techniques sont réservés.

Version du 02.01

Istruzioni di montaggio 732.29.111

E' vietata la copia delle istruzioni di montaggio, anche soltanto parziale, oppure delle raffigurazioni e dei disegni come anche la riproduzione del layout.

E' esclusa qualsiasi responsabilità nei nostri confronti in caso d'errori di stampa e sbagli, sorti durante la produzione delle istruzioni di montaggio.

Con riserva di ulteriori possibilità di fornitura e di modifiche tecniche.

Stato 02.01

Instrucciones de instalación 732.29.111

Queda rigurosamente prohibida la reproducción total o parcial de esta documentación, así como la imitación de sus ilustraciones, dibujos o diseño.

No nos hacemos responsables en manera alguna de las erratas o equivocaciones que pudieran existir en estas instrucciones de instalación.

Nos reservamos la posibilidad de suministro y los derechos a modificación.

Versión 02.01

Copyright

Häfele GmbH & Co

Adolf-Häfele-Strasse 1 · D-72202 Nagold

Postfach 1237 · D-72192 Nagold

Telefon +49 (0) 74 52 / 95-0

Telefax +49 (0) 74 52 / 95-200

E-Mail: info@haefele.de · www.haefele.de