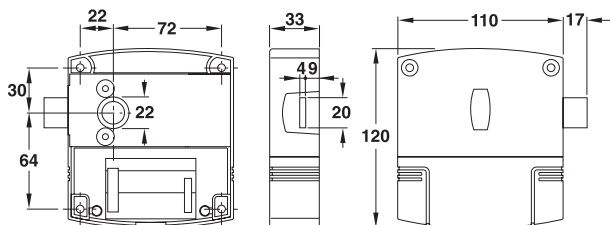


Locker lock set

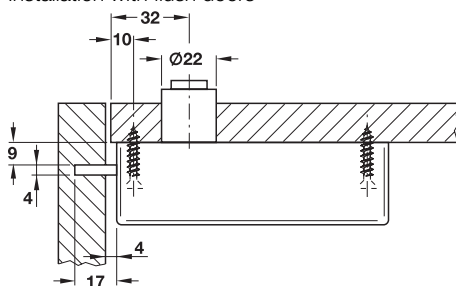
→ With Legic® and Tag-it™-ISO processor



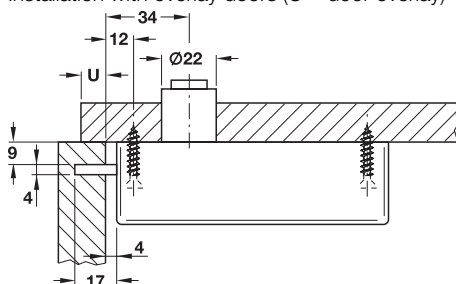
Dimensions locker lock



Installation with flush doors



Installation with overlay doors (U = door overlay)



Technical description

- Function:** Battery operated, intelligent locker lock, free choice of locker:
 Every Diallock key can lock and unlock an open locker.
 Also fixed allocation:
 Diallock key is allocated to a locker.

 Battery status indicator:
 Locker can be opened but cannot be locked when battery change is indicated.

 Emergency opening with master key function possible.

 Integrated real-time clock for logging of all processes.

 Cable interface for programming.
- Area of application:** For indoor use:
 For wardrobes, lockers and compartment cabinets with doors made of wood or HPL.
- Version:** Factory settings for right doors, can be adapted to left doors.

 Batteries protected against theft.

 Plastic anthracite housing, stainless steel deadbolt (quality 1.4310), operating instructions silver coloured in the form of pictograms.

Technical data


Protection class	IP 44
Ambient temperature (operation)	0 – 70 °C
Storing temperature	–20 – 85 °C
Relative humidity	10 – 90 % (non-condensating)
Batteries (4 pieces)	AA 1.5 V type E91
Service life of battery	approx. 18,000 locking and unlocking processes
Number of possible Diallock keys	30

Technical reference

Can only be used with Diallock keys, key tag and KB key wristband.

Specifications/ordering overview



	Technology	Cat. No.
	Legic®	231.85.002
	Tag-it™-ISO	231.90.000

Ordering unit locker lock set

- 1 Locker lock
- 1 Operating instructions in the form of pictograms, self-adhesive
- 1 Number plate without numbering

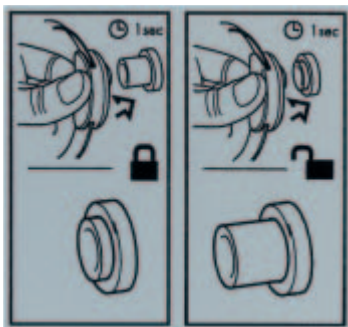
Order reference

Please order separately:
 Batteries,
 at least 1 maintenance tool for changing the battery,
 Tool key card for resetting the battery control.

Cross reference

Programming cable	▶ Page DK 60
Maintenance tool	▶ Page DK 77
Battery	▶ Page DK 77
Other locker lock accessories	▶ Page DK 77
Tool key card	▶ Page DK 78

Locker lock operating instructions



Technical description

- Function: Short graphical instructions for using locker lock.
 - Area of application: For glue fixing to door (inside and outside).
 - Version: Plastic, self-adhesive foil.
- Height x width:
Optional 65 x 69 mm or 85 x 89 mm.

Specifications/ordering overview

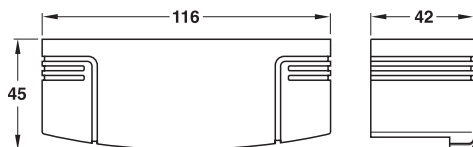


Dimensions mm	Colour	Cat. No.
65 x 69	Silver coloured	231.81.200
	Transparent	231.81.300
85 x 89	Silver coloured	231.85.210
	Transparent	231.85.310

Ordering unit operating instructions

100 Sets of operating instructions

Maintenance tool



Technical description

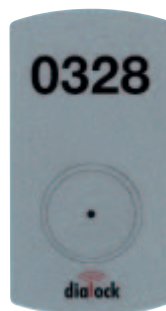
- Function: For opening the cover of battery hold of locker lock.
- Version: Plastic anthracite.

Specifications/ordering overview



	Cat. No.
Locker lock maintenance tool	231.80.100

Number plate



Technical description

- Function: To identify lockers when Dialock LL locker lock is used.
 - Area of application: For glue fixing to door.
 - Version: Plastic silver coloured. Self-adhesive.
- Drill hole Ø 22.3 mm.

Technical data

Version as amplifier antenna:	
Dimensions	85 x 54 mm (credit card size)
Thickness	0.85 mm
Version not as amplifier antenna:	
Dimensions	70 x 37 mm

Specifications/ordering overview



	Cat. No.
Number plate, neutral (without number)	231.81.100
Number plate with number**	231.81.000

**When ordering, please specify the required number (4 digits) for the label.

Ordering unit number plate

200 Number plates

Battery



Technical description

- Version: Alkaline manganese battery 1.5 V Mignon

Specifications/ordering overview



	Cat. No.
Battery	910.54.980

Order reference

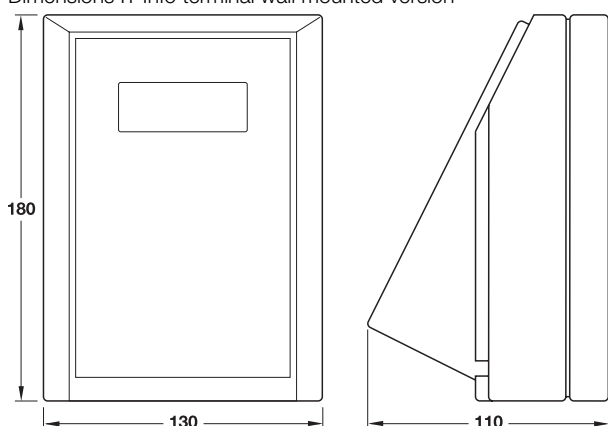
Minimum order quantity 4 pieces.

IT Info terminal set

→ With Legic® processor or Tag-it™-ISO processor



Dimensions IT Info terminal wall mounted version



Technical description

- **Function:** Indicating the number of the locker for which the Dialock key is authorised.
Neutralising of Dialock keys.
Macro capable. A macro provides customised extension of functions.
- **Area of application:** In combination with locker lock.
- **Version:** White plastic housing.
2 Function keys.
4-line LC display with 16 characters each.
Integrated infrared interface.
Language settings, pre-set to English.
Optional as table top version or wall mounted version.
Table top version:
With plug-in power supply unit.
Wall mounted version:
Without plug-in power supply unit.

Technical data


Power supply	10 – 12 V DC, 8 – 9 V AC
Continuous current consumption	200 mA
Protection class	IP 65
Ambient temperature (operation)	0 – +60 °C
Humidity	0 – 95 % (non-condensating)

Technical reference

Wall mounting: Attach fixing plate at suitable height.
The installation site ought to be easily accessible to operate.

Specifications/ordering overview



	Technology	Version	Cat. No.
	Legic®	Wall mounted version	917.22.061
		Table top version	917.22.071
	Tag-it™-ISO	Wall mounted version	917.42.061
		Table top version	917.42.071

Ordering unit IT Info terminal set

- 1 IT Info terminal
- 1 Front foil for sticking on
- 1 Dialock Configuration key

Cross reference

Personnel SP Software ▶ Page DK 46

Tool key card

→ With Legic® or Tag-it™-ISO

Technical description

- **Function:** Resetting battery control after battery change.
- **Area of application:** Dialock Locker lock.
- **Version:** Legic® technology or Tag-it™-ISO technology.
Card in ISO format.

Technical reference

The push button of the Dialock locker lock is pushed by the Tool-Key-Card: Both LEDs flash briefly and the locker lock is back in operating mode.

Specifications/ordering overview



Technology	Cat. No.
Legic®	917.22.028
Tag-it™-ISO	917.42.028