

MOT Wall terminal set

→ With Legic® processor or Tag-it™-ISO processor

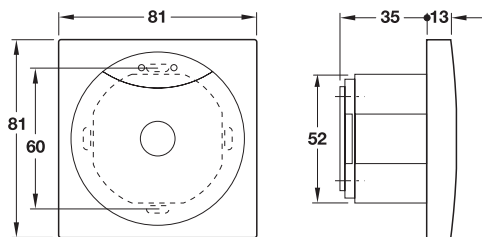


Wall reader with standard design

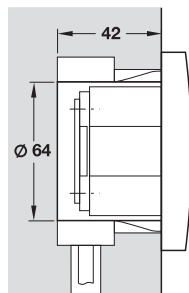


Electronic control unit in housing for hat rail installation

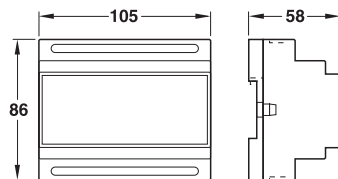
Dimensions wall reader



Space requirement flush mounted box



Dimensions electronic control unit



Technical description

- **Function:** Mains operated, intelligent wall terminal for various applications. Touchless activation of functions via Dialock key: Selective control of up to 4 output ports. Can be extended to max. 128 output ports in combination with OE output extender. Red/green LEDs for indication of the activation status. For service personnel: Indication of programming status. Infrared interface in wall reader for programming. Electronic control unit with integrated real-time clock for programming time restricted locking authorisations (setting of time zones), logging of all processes, with 4 input ports for analysing input signals (e.g. reed contact for door monitoring), with serial interface RS 232 for optional networking via online sets. Optional extension of functions by means of additional macro software.
- **Area of application:** For outdoor and indoor use: Lift control, locker systems, equipment and furniture, lighting.
- **Version:** Wall reader: Plastic anthracite/silver coloured housing.
Electronic control unit: Light grey plastic housing.

Technical data

Wall reader		
Protection class	IP 65	
Ambient temperature (operation)	-20 – +70 °C	
Power supply	Via electronic control unit	
Connection	Screw terminals 1.0 mm ²	
Electronic control unit		
Protection class	IP 20	
Ambient temperature (operation)	-20 – +70 °C	
Power supply	9 – 40 V DC or 8 – 36 V AC	
Current input	<150 mA, ≥300 mA	
Contact rating of relays	Voltage	≤60 V DC or ≤125 V AC
	Switching current	≤2 A (momentary)
	Switching capacity	≤30 W or ≤60 VA
	Continuous current	≤1 A
Data storage in the event of a power failure	≥10 years	
Relative humidity	0 – 95 % (non-condensating)	
Connection	Screw terminals 2.5 mm ²	
Hat rail installation M36 rail technology	6 joint units	

Technical reference

Connection between wall reader and electronic control unit with four core installation cable in compliance with VDE 0815: Type J-Y (St) Y 2 x 2 x 0.8 mm (twisted pair, shielded), max. length 50 m (Legic®) or max. length 35 m (Tag-it™-ISO), (please contact Dialock specialist for other lengths). Installation of wall readers in flush mounted box with 2 device fastening screws with 15 mm distance (60 mm in compliance with DIN). Make sure the fastening points on the flush box are horizontal. Minimum distance between 2 wall readers 250 mm. The installation of the wall reader in metal surroundings must be planned.

Specifications/ordering overview



	Technology	System	Cat. No.
	Legic®	Dialock Standard	917.21.142
		Dialock Integra*	917.21.342
	Tag-it™-ISO	Dialock Standard	917.41.142

* Version for integration into online systems. Planning by Dialock specialist is required.

Ordering unit MOT wall terminal set

- 1 Wall reader with standard design with frame
- 1 Electronic control unit in housing for hat rail installation

Order reference

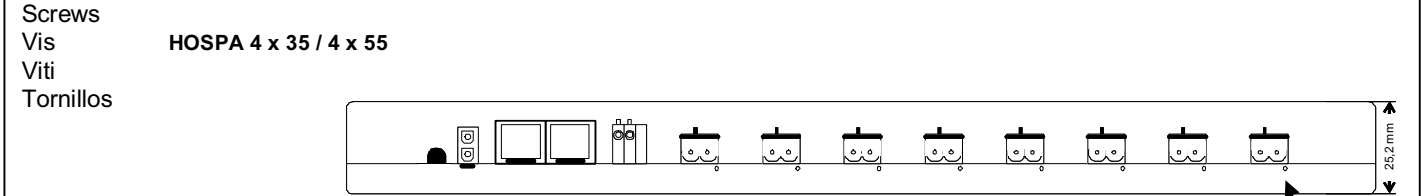
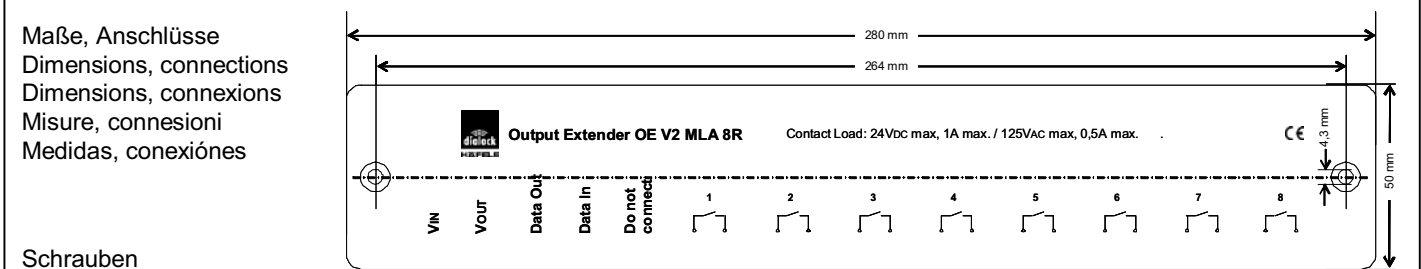
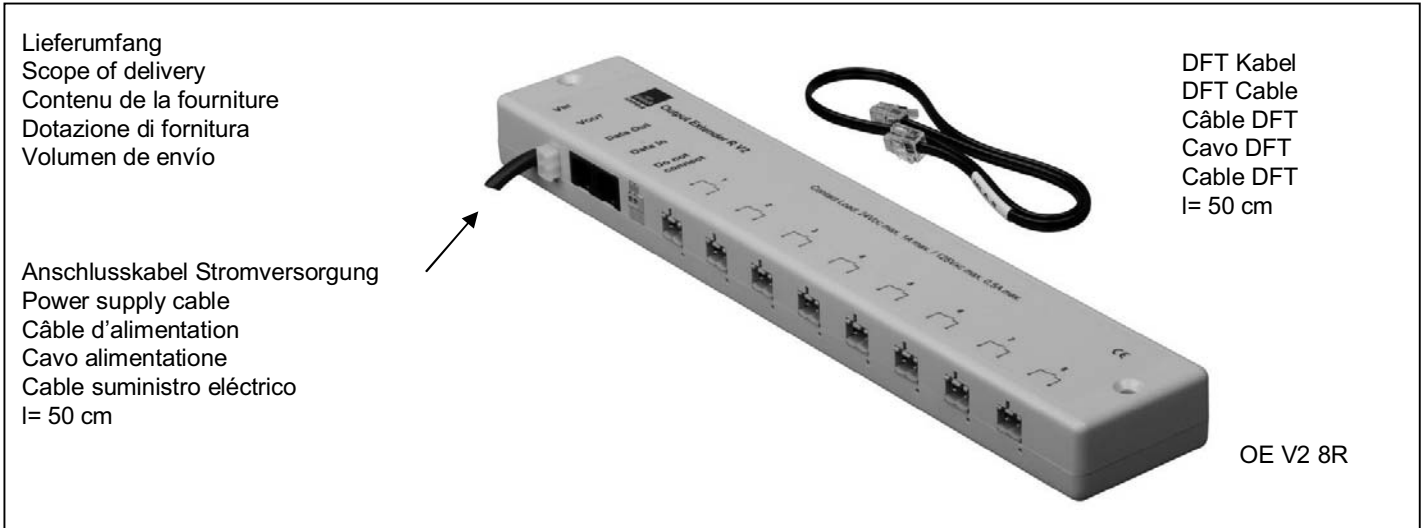
Siedle and Merten designs on request.

Cross reference

Other accessories for wall terminal sets	▶ Page DK 66
OE Electronic output extender	▶ Page DK 67
Additional wall reader on opposite side	▶ Page DK 15
OS Standard Online set	▶ Page DK 21
Online-Set OS TCP/IP	▶ Page DK 22

DK 2006_HDE_09/06; Dimensional data not binding. We reserve the right to alter specifications without notice.

Output Extender V2 8R
Art. 910.51.086



OE V2 8R und Kabel sind immer zu befestigen!
 OE V2 8R and cables have always to be fastened!
 OE V2 8R et le cables doivent toujours être fixé!
 OE V2 8R e i cavi debbano sempre essere avitato!
 Hay que montar el OE V2 8R y los cables siempre!

Technische Daten / Technical data / Specifications techniques / Dimensions, connections / Dati tecnici / Datos técnicos	
Versorgungsspannung / Supply voltage / Voltage d' alimentation / Tensione di funzionamento	9,6 – 14,4 VDC
Tensión de servicio	
Kontaktbelastung / Contact Load / Charge des contactes / Carico di contatti / Carga de los contactos	24VDC max., 1A max. 125 VAC max., 500mA max.
Buchse Relais / Relay Output / Prise relais / Bussola relay / Casquillo relays	Phoenix MSTB 2,5/2-ST
Buchse Data In, Data Out / Jack Data In, Data Out / Prise Data In, Data Out / Bussola Data In, Data Out / Casquillo Data In, Data Out	RJ 11
Temp. Bereich / Temp. Range / Gamme de température / Campo di temperatura / Ámbito de temperatura	0 – 50 °C

Die Inbetriebnahme, Programmierung der Schlüssel sowie Einstellung der Betriebsparameter erfolgt gemäß der Betriebsanleitung MOT. The initial set-up, assignment of user keys, and setting of paramters has to be carried out as described in the Operating Instructions MOT. La mise en service, l'attribution des clefs et le réglage des paramètres operationelles est effectuée selon la Notice d'Emploi MOT. Il settaggio iniziale, l'assegnazione delle chiavi d'utilizzo ed il settaggio dei parametri deve essere eseguito come descritto nelle istruzioni d'utilizzo MOT. La puesta en marcha, la programación de las llaves y los ajustes de los parámetros está efectuado según las instrucciones de funcionamiento MOT.

Mehrere OE V2 8R am MOT
 Plusieurs de OE V2 8R à MOT
 Conectar varias MLA 8R al MOT

Multiple OE V2 8R connected to MOT
 Alcuni OE V2 8R a MOT

